

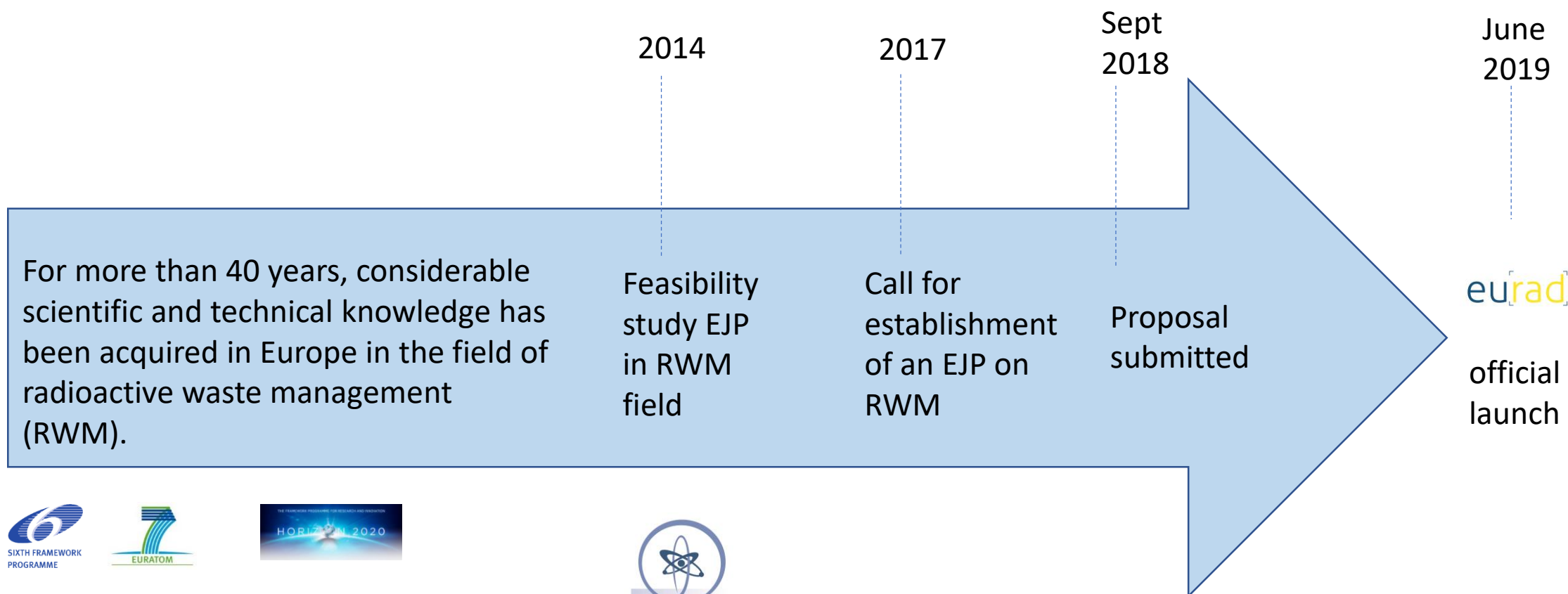
# INTRODUCTION TO THE EUROPEAN JOINT PROGRAMME ON RADIOACTIVE WASTE MANAGEMENT - EURAD

September 14th, 2020 • Louise Théodon



*The project leading to this application has received funding from the European Union's Horizon 2020 research and innovation programme under grant agreement n° 847593.*

## CONTEXT – TOWARDS A EUROPEAN JOINT PROGRAMME IN RWMD



# VISION AND AMBITION

- **VISION**

A step change in European collaboration towards safe radioactive waste management (RWM), including disposal, through the development of a robust and sustained science, technology and knowledge management programme that supports timely implementation of RWM activities and serves to foster mutual understanding and trust between participants.

- **AMBITION**

Establish an inclusive, transparent, leading-edge scientific and goal-oriented, entirely new approach on European collaboration towards safe RWM.

Support the implementation of the [Waste Directive](#) in EU Member-States (MS), taking into account the various stages of advancement of national programmes by :

- Developing and consolidating existing knowledge
- Enhancing knowledge management and transfer between organisations, MS and generations
- Developing and implementing the national RD&D programmes for the safe long term management of their full range of different types of radioactive waste;

## OBJECTIVES



- Implement a robust and sustained state-of-the-art science and technology programme by:
  - Complementing national R&D programmes
  - Carrying out activities of high common interest where there is added value at the European level
  - Supporting research needs of advances and early stage programmes
- Foster mutual understanding / trust between participants as well as other stakeholders, incl. from Civil Society
- Consolidate efforts across Member-States, organisations and generations on Knowledge Management
  - Access to existing knowledge
  - Guiding the development of capability in line with core competencies
  - Improving access to quality tools, resources and communities of practice to share and learn from each other
- Elaborate upon complex issues and identify emerging ones by bringing together all interested actors to jointly conduct Strategic Studies

# EURAD STRATEGIC RESEARCH AGENDA



- **SHARED**

- Building on the SRAs of the three colleges

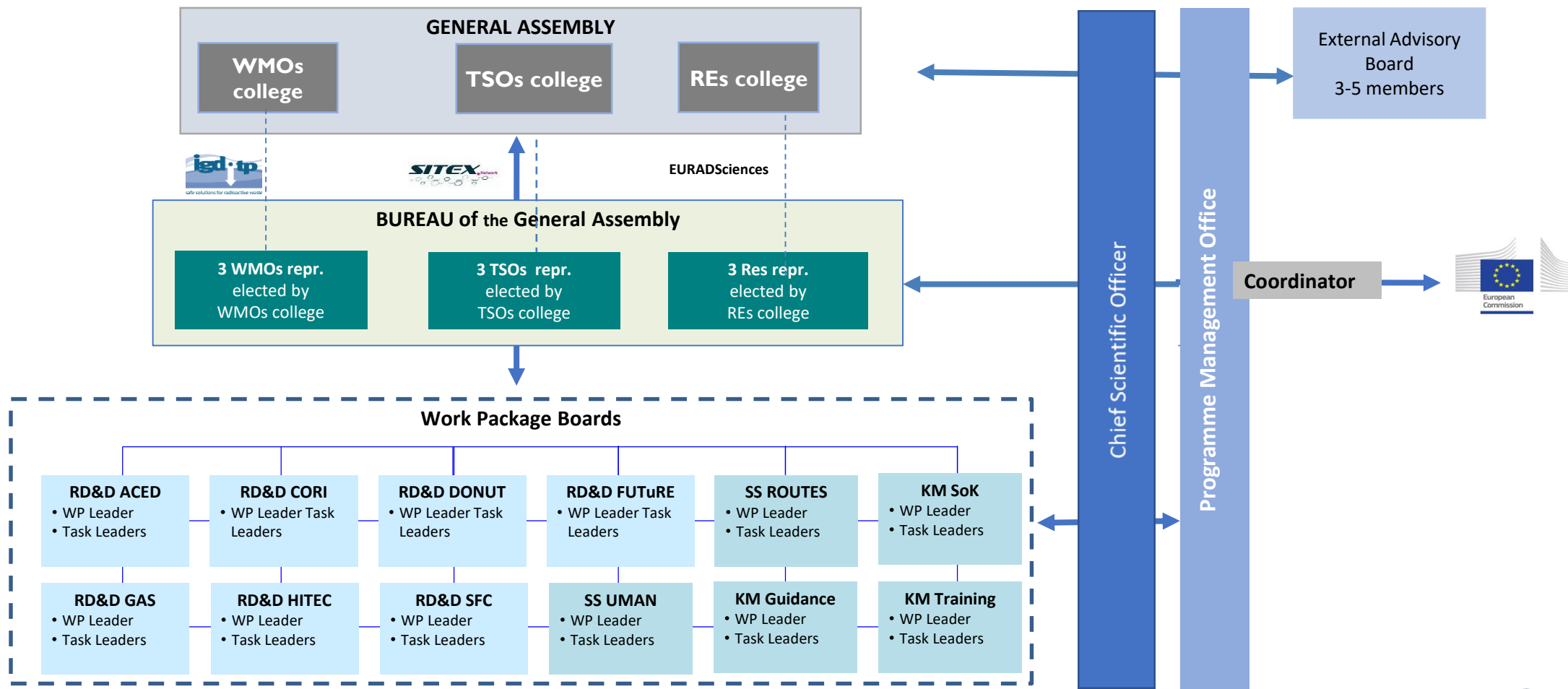
- **LIVING AND DYNAMIC**

- Regularly updated

- **BROAD SPECTRUM**

- Frames research and knowledge management objectives
  - Covers RWM activities from cradle to grave (does not cover decommissioning)
    - All waste types
    - Pre-disposal
    - disposal

# EURAD GOVERNANCE



## PLURALITY OF ACTORS



- **Gathering three Colleges on a scientific basis towards implementation**

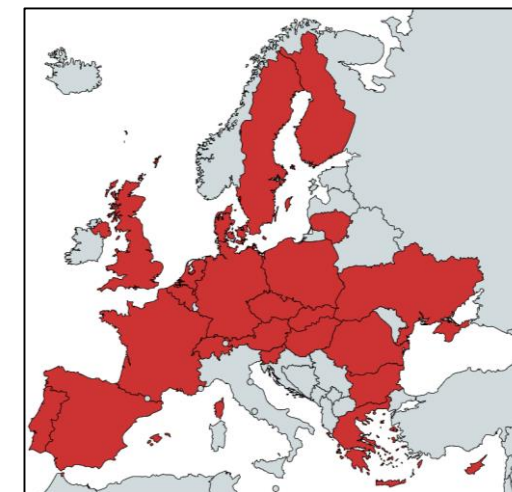
- Different legal contexts for the RWM
- Different host rocks and disposals concepts
- Different stages in the implementation of the national programmes
  - Countries with well advanced programmes
  - Countries with less advanced programmes
- Variety of research domains

 **EURAD is a community**

## EURAD MANDATED ACTORS (BENEFICIARIES)

**Ministries** from **23 European countries** (21 Member-States, 2 Associated countries) provided **mandates** to **51 organisations** acting as **Beneficiary** within EURAD, recognising their role of directing RD&D at national level, as:

- Waste Management Organisation (**WMO**);
- Technical Support Organisation (**TSO**); or
- Research Entity (**RE**).



**19 Waste Management Organisations** Whose mission covers the management and disposal of radioactive waste



**13 regulatory Technical Support Organisations** Providing S/T basis for supporting regulators' decisions



**19 nationally funded Research Entities** Working on the RWM challenges under the responsibility of MS

eurad





## EURAD OTHER PARTICIPANTS

- **53 additional organisations (mostly universities and research centres) are also involved in the implementation of tasks as third parties with a legal link to a Beneficiary (Linked Third Parties).**
- **Groups of Civil Society organisations such as local communities having interest in RWM (local association, local Committee of Information, local partnership), national or European CS Organisations taking part in interactions in the field of RWM.**
- **Links with International Organisations**